



MALINENI LAKSHMAIAH WOMEN'S ENGINEERING COLLEGE, GUNTUR

Approved by AICTE, New Delhi & Affiliated to JNTUK, Kakinada

(An ISO9001:2008 Certified Institution)

Pulladigunta (Vil), Vatticherukuru (Md), Prathipadu Road, Guntur – 522 017 A.P.

DEPARTMENT OF ELECTRONICS AND COMMUNICATION ENGINEERING

Report on Analysis Feedback on Curriculum Collected From Different Stakeholders

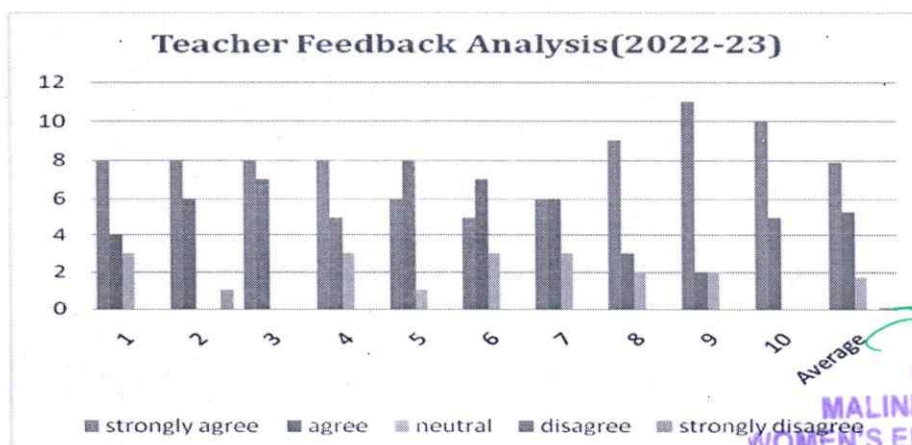
Academic Year: 2022-2023


Teachers' Feedback on Curriculum:

The Feedback on Curriculum is taken by respective 15 subject teachers regarding suggestions on Improvement of the syllabus

(5-strongly agree, 4-agree, 3-neutral, 2-disagree, 1-strongly disagree)

Curriculum Evaluation:	5	4	3	2	1
1. Is the Syllabus suitable to the program	8	4	3		
2. Is the Syllabus need based	8	6			1
3. Were the Aims and Objectives of the syllabus well defined and clear to the teachers and students?	8	7			
4. Is the Course content follows the corresponding reference materials	8	5	3		
5. Does the course/syllabus have good balance between theory and practice?	6	8	1		
6. Does the course/syllabus have created interest in the subject area?	5	7	3		
7. Does the course/syllabus of this subject increase student knowledge and perspective in the subject area?	6	6	3		
8. Does the course/program of studies carry sufficient number of optional courses?	9	3	2		
9. Does the books prescribed/listed as reference materials are relevant, updated and appropriate	11	2	2		
10. Do you have the freedom to adopt new techniques/strategies of teaching such as seminar presentations, group discussions and learners' participations?	10	5			
Average	7.9	5.3	1.7		0.1




PRINCIPAL
MALINENI LAKSHMAIAH
WOMEN'S ENGINEERING COLLEGE
PULLADIGUNTA, GUNTUR-17



MALINENI LAKSHMAIAH WOMEN'S ENGINEERING COLLEGE, GUNTUR

Approved by AICTE, New Delhi & Affiliated to JNTUK, Kakinada

(An ISO9001:2008 Certified Institution)

Pulladigunta (Vil), Vatticherukuru (Md), Prathipadu Road, Guntur – 522 017 A.P.

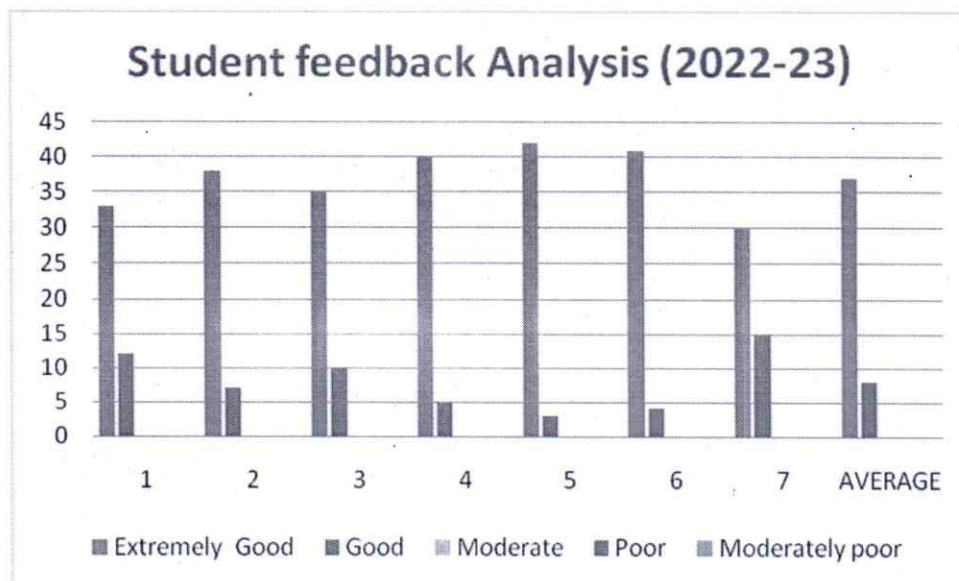
DEPARTMENT OF ELECTRONICS AND COMMUNICATION ENGINEERING


STUDENT FEED BACK FORM ON CURRICULUM:

Feedback on Syllabus is taken and analyzed 45 Students collected to relevant questionnaires

5	4	3	2	1
Extremely Good	Good	Moderate	Poor	Extremely Poor

S.No.	Particulars	Rating				
		5	4	3	2	1
1	1.Learning value (in terms of skills, concepts, knowledge, analytical abilities, or	33	12			
	2.Applicability/relevance to real life situations					
	3.Depth of the course content					
	4.Extent of coverage of course					
	5.Extent of effort required by students					
	6.Relevance/learning value of project/ report					
	7.Overall rating					
2	The syllabus was	38	7			
3	Your background for benefiting from the course was	35	10			
4	How much of the syllabus was taught in class?	40	5			
5	What is your opinion about the library holdings for	42	3			
6	Were you able to get the prescribed course materials?	41	4			
7	In your opinion, how much of the total weight age of a	30	15			
	AVERAGE	37	8			




 PRINCIPAL
 MALINENI LAKSHMAIAH
 WOMEN'S ENGINEERING COLLEGE
 PULLADIGUNTA GUNTUR-17



MALINENI LAKSHMAIAH WOMEN'S ENGINEERING COLLEGE, GUNTUR

Approved by AICTE, New Delhi & Affiliated to JNTUK, Kakinada

(An ISO9001:2008 Certified Institution)

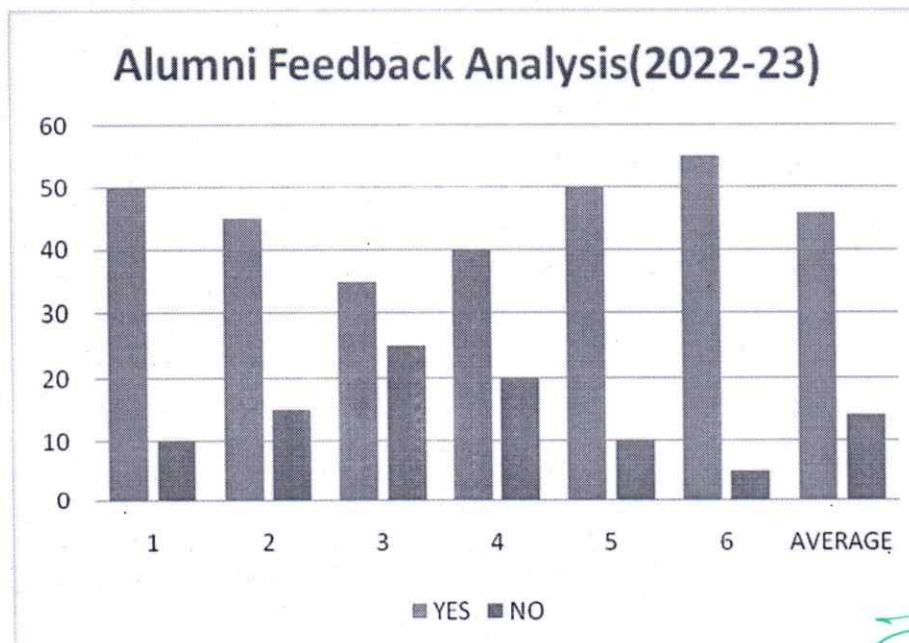
Pulladigunta (Vil), Vatticherukuru (Md), Prathipadu Road, Guntur – 522 017 A.P.

DEPARTMENT OF ELECTRONICS AND COMMUNICATION ENGINEERING

ALUMNI FEEDBACK FORMS ON CURRICULUM:

Our Alumni's provide the Feedback regarding improvement in facilities and employability of our students. We analyzed the data on their provided feedback.

Q.NO	Curriculum Evaluation Points	YES	NO
1	Was the syllabus that was updated enough? If no, then specify the technologies/topics to be added to make it more updated	50	10
2	Was the course content delivery interesting? If no, specify the ways that it could be more interesting	45	15
3	Did the course curriculum intellectually stimulate you? Explain the ways	35	25
4	Was the course curriculum fulfilling your expectations? If no, specify the reason	40	20
5	Have you learnt any new skills in the due course of your study?(other than syllabus)specify them	50	10
6	Does the syllabus create any interest to pursue post graduation /Research in the particular topic	55	5
AVERAGE		45.83	14.16



[Signature]
PRINCIPAL

MALINENI LAKSHMAIAH
WOMEN'S ENGINEERING COLLEGE
PULLADIGUNTA, GUNTUR-17.



MALINENI LAKSHMAIAH WOMEN'S ENGINEERING COLLEGE, GUNTUR

Approved by AICTE, New Delhi & Affiliated to JNTUK, Kakinada

(An ISO9001:2008 Certified Institution)

Pulladigunta (Vil), Vatticherukuru (Md), Prathipadu Road, Guntur – 522 017 A.P.

DEPARTMENT OF ELECTRONICS AND COMMUNICATION ENGINEERING

Industry / Employer Feedback on the curriculum:

Employer Feedback is collected and analyzed taken on the syllabus designed by JNTU, Kakinada.

S.No	Question	Excellent	Very Good	Good	Average	Poor
1	How do you rate relevance of the courses in relation to the program?	8		2		
2	How do you rate the sufficiency of the courses related to industry that are included in the program?	2	4	2	2	
3	How do you rate the competencies in relation to the course content?	4	4	2		
4	How do you rate the sequence of the units in the syllabus?	6	2		2	
5	How do you rate the relevance of the topics to the Industry?	6		4		
6	Rate the offering of the curriculum content in relation to the specialization streams?	4	4		2	
7	How do you rate the offering of the electives in relation to the Technological advancements?	4	2	4		
8	How do you rate the courses which are skills related suitable to the Industry included into the programs?	4	4	2		
9	How do you rate the applicability of the domains and the tools used for designing the experiments in terms of existing practices in the	2	6	2		
10	How do you rate the experiments in terms of their relevance to the real life application?	4		6		
	AVERAGE	4.4	2.6	2.4	0.6	


PRINCIPAL
MALINENI LAKSHMAIAH
WOMEN'S ENGINEERING COLLEGE
PULLADIGUNTA, GUNTUR-17.



MALINENI LAKSHMAIAH WOMEN'S ENGINEERING COLLEGE, GUNTUR

Approved by AICTE, New Delhi & Affiliated to JNTUK, Kakinada

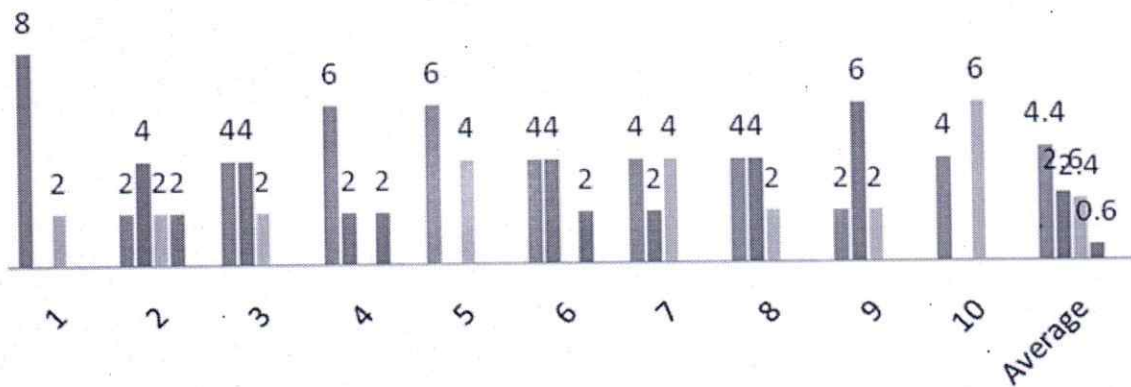
(An ISO9001:2008 Certified Institution)

Pulladigunta (Vil), Vatticherukuru (Md), Prathipadu Road, Guntur – 522 017 A.P.

DEPARTMENT OF ELECTRONICS AND COMMUNICATION ENGINEERING

Industry/Employer Feedback Analysis(2022-2023)

■ Excellent ■ Very Good ■ Good ■ Average ■ Poor



[Handwritten Signature]

Signature of HOD

HOD

Dept. of Electronics & Communication Engineering
 Malineni Lakshmaiah Women's Engineering College
 Pulladigunta, GUNTUR-522017

[Handwritten Signature]

PRINCIPAL

**MALINENI LAKSHMAIAH
 WOMEN'S ENGINEERING COLLEGE
 PULLADIGUNTA, GUNTUR-17**



MALINENI LAKSHMAIAH WOMEN'S ENGINEERING COLLEGE, GUNTUR

Approved by AICTE, New Delhi & Affiliated to JNTUK, Kakinada

(An ISO9001:2008 Certified Institution)

Pulladigunta (Vil), Vatticherukuru (Md), Prathipadu Road, Guntur – 522 017 A.P.

DEPARTMENT COMPUTER SCIENCE AND ENGINEERING

Report on Analysis Feedback on Curriculum Collected From Different Stakeholders

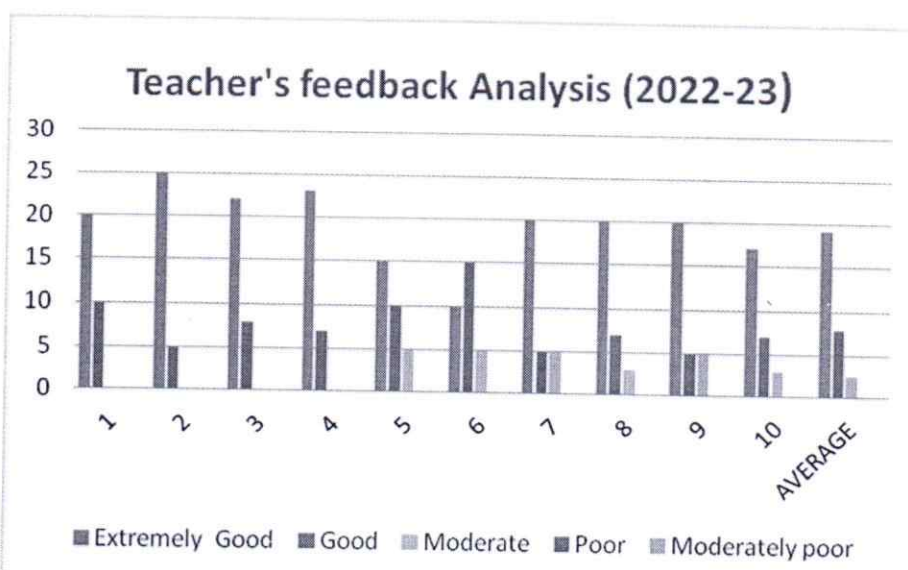
Academic Year: 2022-2023


Teachers' Feedback on Curriculum:

The Feedback on Curriculum is taken by respective 15 subject teachers regarding suggestions on Improvement of the syllabus

(5-strongly agree, 4-agree, 3-neutral, 2-disagree, 1-strongly disagree)

Curriculum Evaluation	5	4	3	2	1
1. Is the Syllabus suitable to the program	20	10			
2. Is the syllabus need based	25	5			
3. Were the Aims and Objectives of the syllabus well defined and clear to the teachers and students?	22	8			
4. Is the Course Content follows the corresponding reference materials	23	7			
5. Does the course/syllabus have good balance between theory and practice?	15	10			
6. Does the course/syllabus have created Interest in the subject area?	10	15	5		
7. Does the course/syllabus of this subject increase student knowledge and perspective in subject area?	20	5	5		
8. Does the course/program of studies carry sufficient no of optional courses?	20	7	3		
9. Does the books prescribed /listed as reference materials are relevant, updated and appropriate	20	5	5		
10. Do you have the freedom to adopt new techniques/strategies of teaching such as seminar presentations, group discussions and learner's participations?	17	7	3		
Average	19.2	7.9	2.6		




 PRINCIPAL
 MALINENI LAKSHMAIAH
 WOMEN'S ENGINEERING COLLEGE
 GUNTUR-522017.



MALINENI LAKSHMAIAH WOMEN'S ENGINEERING COLLEGE, GUNTUR

Approved by AICTE, New Delhi & Affiliated to JNTUK, Kakinada

(An ISO9001:2008 Certified Institution)

Pulladigunta (Vil), Vatticherukuru (Md), Prathipadu Road, Guntur – 522 017 A.P.

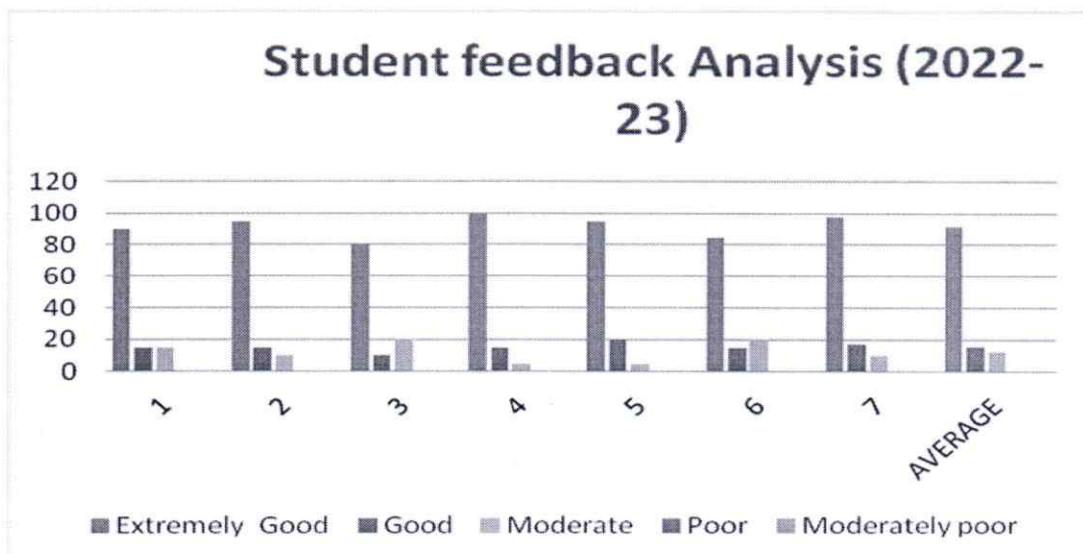
DEPARTMENT COMPUTER SCIENCE AND ENGINEERING

STUDENT FEED BACK FORM ON CURRICULUM:

Feedback on Syllabus is taken and analyzed 45 Students collected to relevant questionnaires

5	4	3	2	1
Extremely Good	Good	Moderate	Poor	Extremely Poor

S.No.	Particulars	Rating				
		5	4	3	2	1
1	1.Learning value (in terms of skills, concepts, knowledge, analytical abilities, or	90	15	15		
	2.Applicability/relevance to real life situations					
	3.Depth of the course content					
	4.Extent of coverage of course					
	5.Extent of effort required by students					
	6.Relevance/learning value of project/ report					
	7.Overall rating					
2	The syllabus was	95	15	10		
3	Your background for benefiting from the course was	80	10	20		
4	How much of the syllabus was taught in class?	100	15	5		
5	What is your opinion about the library holdings for	95	20	5		
6	Were you able to get the prescribed course materials?	85	15	20		
7	In your opinion, how much of the total weight age of a	98	17	10		
	AVERAGE	91.8	15.2	12.1		



PRINCIPAL
MALINENI LAKSHMAIAH
WOMEN'S ENGINEERING COLLEGE
PULLADIGUNTA, GUNTUR-522017.



MALINENI LAKSHMAIAH WOMEN'S ENGINEERING COLLEGE, GUNTUR

Approved by AICTE, New Delhi & Affiliated to JNTUK, Kakinada

(An ISO9001:2008 Certified Institution)

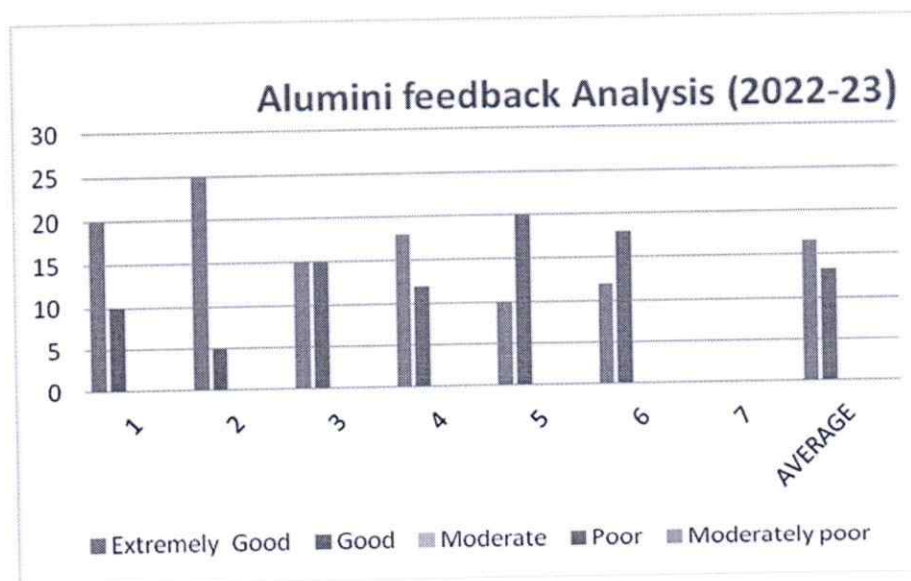
Pulladigunta (Vil), Vatticherukuru (Md), Prathipadu Road, Guntur – 522 017 A.P.

DEPARTMENT COMPUTER SCIENCE AND ENGINEERING

ALUMNI FEEDBACK FORMS ON CURRICULUM:

Our Alumni's provide the Feedback regarding improvement in facilities and employability of our students. We analyzed the data on their provided feedback.

Q.NO	Curriculum Evaluation Points	YES	NO
1	Was the syllabus that was updated enough? If no, then specify the technologies/topics to be added to make it more updated	20	10
2	Was the course content delivery interesting? If no, specify the ways that it could be more interesting	25	5
3	Did the course curriculum intellectually stimulate you? Explain the ways	15	15
4	Was the course curriculum fulfilling your expectations? If no, specify the reason	18	12
5	Have you learnt any new skills in the due course of your study?(other than syllabus)specify them	10	20
6	Does the syllabus create any interest to pursue post graduation /Research in the particular topic	12	18
AVERAGE		16.6	13.3



PRINCIPAL
 MALINENI LAKSHMAIAH
 WOMEN'S ENGINEERING COLLEGE
 PULLADIGUNTA, GUNTUR - 522017.



MALINENI LAKSHMAIAH WOMEN'S ENGINEERING COLLEGE, GUNTUR

Approved by AICTE, New Delhi & Affiliated to JNTUK, Kakinada

(An ISO9001:2008 Certified Institution)

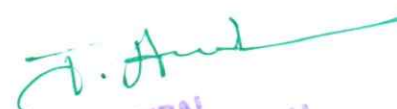
Pulladigunta (Vil), Vatticherukuru (Md), Prathipadu Road, Guntur – 522 017 A.P.

DEPARTMENT COMPUTER SCIENCE AND ENGINEERING

Industry / Employer Feedback on the curriculum:

Employer Feedback is collected and analyzed taken on the syllabus designed by JNTU, Kakinada.

S.N O	Question	Excellent	Very Good	Good	Average	Poor
1	How do you rate relevance of the courses in relation to the program?	10	5			
2	How do you rate the sufficiency of the courses related to industry that are included in the program?	9	6			
3	How do you rate the competencies in relation to the course content?	11	4			
4	How do you rate the sequence of the units in the syllabus?	8	7			
5	How do you rate the relevance of the topics to the Industry?	10	5			
6	Rate the offering of the curriculum content in relation to the specialization streams?	11	4			
7	How do you rate the offering of the electives in relation to the Technological advancements?	9	6			
8	How do you rate the courses which are skills related suitable to the Industry included into the programs?	8	7			
9	How do you rate the applicability of the domains and the tools used for designing the experiments in terms of existing practices in the	7	8			
10	How do you rate the experiments in terms of their relevance to the real life application?	12	3			
	AVERAGE	9.5	5.5			


PRINCIPAL
MALINENI LAKSHMAIAH
WOMEN'S ENGINEERING COLLEGE
PULLADIGUNTA, GUNTUR-522017.



MALINENI LAKSHMAIAH WOMEN'S ENGINEERING COLLEGE, GUNTUR

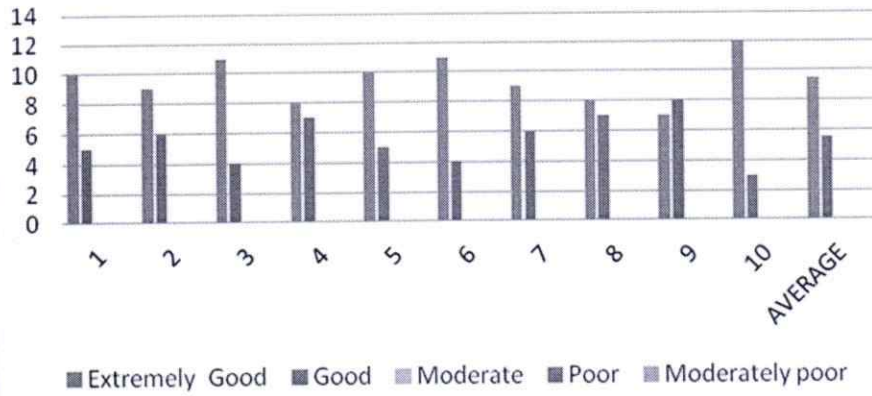
Approved by AICTE, New Delhi & Affiliated to JNTUK, Kakinada

(An ISO9001:2008 Certified Institution)

Pulladigunta (Vil), Vatticherukuru (Md), Prathipadu Road, Guntur – 522 017 A.P.

DEPARTMENT COMPUTER SCIENCE AND ENGINEERING

Industry/Employer feedback Analysis (2022-23)




Signature of HOD







MALINENI LAKSHMAIAH

WOMEN'S ENGINEERING COLLEGE

(Approved by AICTE, Affiliated to JNTUK)

(An ISO9001:2008 Certified Institution)

Department of INFORMATION TECHNOLOGY

Academic Year: 2022-23

Report on Analysis Feedback on Curriculum Collected From Different Stakeholders

Teachers' Feedback on Curriculum:

The Feedback on Curriculum is taken by respective 12 subject teachers regarding suggestions on Improvement of the syllabus

(5-strongly agree, 4-agree, 3-neutral, 2-disagree, 1-strongly disagree)

Curriculum Evaluation points	Response in %				
	5-Strongly Agree	4-Agree	3-Neutral	2-Disagree	1-Strongly Disagree
Is the Syllabus suitable to the program	6	3	1	2	0
Is the Syllabus need based	5	6	1	0	0
Were the Aims and Objectives of the syllabus well defined and clear to the teachers and students?	5	3	2	2	0
Is the Course content follows the corresponding reference materials	6	3	2	1	0
Does the course/syllabus have good balance between theory and practice?	6	2	3	1	0
Does the course/syllabus have created interest in the subject area?	6	4	2	0	0
Does the course/syllabus of this subject increase student knowledge and perspective in the subject area?	7	1	3	1	0
Does the course/program of studies carry sufficient number of optional courses?	6	2	2	2	0

PRINCIPAL
MALINENI LAKSHMAIAH
WOMEN'S ENGINEERING COLLEGE
PULLADIGUNTA, GUNTUR-7

[Handwritten Signature]



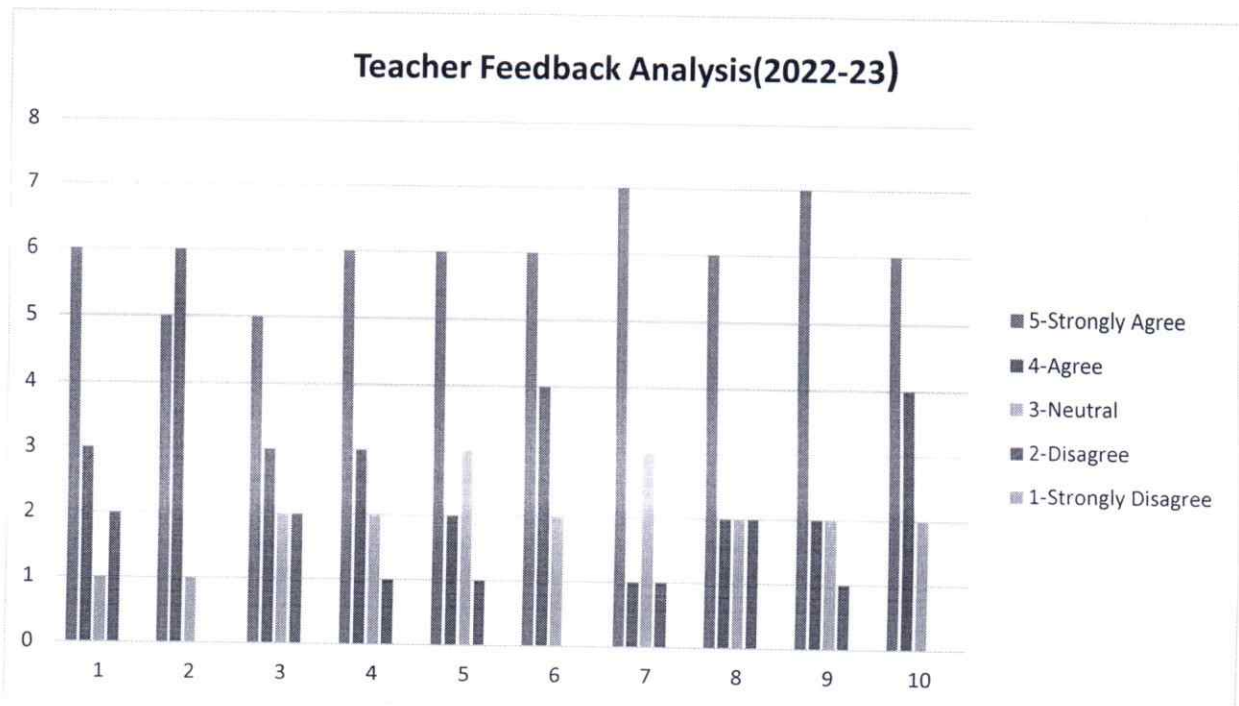
MALINENI LAKSHMAIAH WOMEN'S ENGINEERING COLLEGE

(Approved by AICTE, Affiliated to JNTUK)
(An ISO9001:2008 Certified Institution)

Department of INFORMATION TECHNOLOGY

Academic Year: 2022-23

9	Does the books prescribed/listed as reference materials are relevant, updated and appropriate	7	2	2	1	0
10	Do you have the freedom to adopt new techniques/strategies of teaching such as seminar presentations, group discussions and learners' participations?	6	4	2	0	0
Average		6	3	2	1	0



(Handwritten Signature)

**PRINCIPAL
MALINENI LAKSHMAIAH
WOMEN'S ENGINEERING COLLEGE
PULLADIGUNTA, GUNTUR- 7**



MALINENI LAKSHMAIAH

WOMEN'S ENGINEERING COLLEGE

(Approved by AICTE, Affiliated to JNTUK)

(An ISO9001:2008 Certified Institution)

Department of INFORMATION TECHNOLOGY

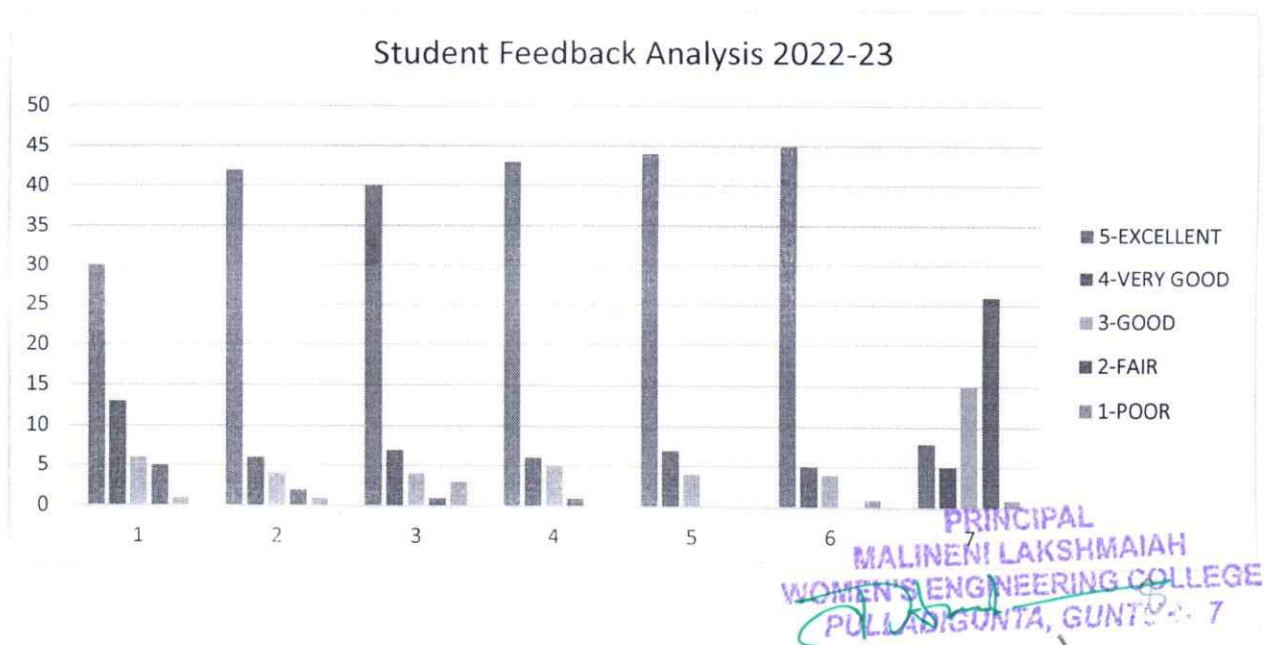
Academic Year: 2022-23

STUDENT FEED BACK FORM ON CURRICULUM:

Feedback on Syllabus is taken and analyzed 55 Students Collected to relevant questionnaires

5	4	3	2	1
Extremely Good	Good	Moderate	Poor	Extremely Poor

Q.NO	Curriculum Evaluation points	Response in %				
		5-EXCELLENT	4-VERY GOOD	3-GOOD	2-FAIR	1-POOR
1	Please give a rating of your course	30	13	6	5	1
2	The syllabus was	42	6	4	2	1
3	Your background for benefiting from the course was	40	7	4	1	3
4	How much of the syllabus was taught in class?	43	6	5	1	0
5	What is your opinion about the library holdings for the course?	44	7	4	0	0
6	Were you able to get the prescribed course materials?	45	5	4	0	1
7	In your opinion, how much of the total weightage of a course should the internal assessment account for?	8	5	15	26	1
	Average	36	7	6	5	1





MALINENI LAKSHMAIAH WOMEN'S ENGINEERING COLLEGE

(Approved by AICTE, Affiliated to JNTUK)
(An ISO9001:2008 Certified Institution)

Department of INFORMATION TECHNOLOGY

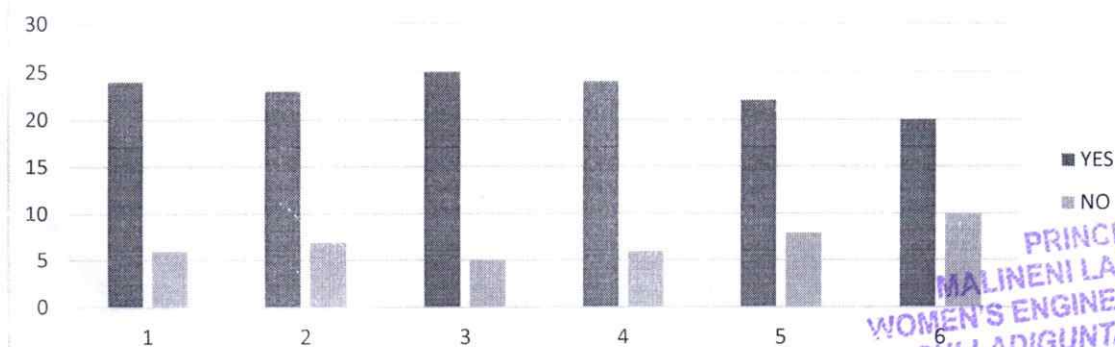
Academic Year: 2022-23

ALUMNI FEEDBACK FORMS ON CURRICULUM:

Our Alumni's provide the Feedback regarding improvement in facilities and employability of our students. We analyzed the data on their provided feedback.

Q.NO	Curriculum Evaluation Points	Response in	
		YES	NO
1	Was the syllabus that was updated enough? If no, then specify the technologies/topics to be added to make it more updated	24	6
2	Was the course content delivery interesting? If no, specify the ways that it could be more interesting	23	7
3	Did the course curriculum intellectually stimulate you? Explain the ways	25	5
4	Was the course curriculum fulfilling your expectations? If no, specify the reasons	24	6
5	Have you learnt any new skills in the due course of your study?(other than syllabus)specify them	22	8
6	Does the syllabus create any interest to pursue post graduation /Research in the particular topic	20	10
	Average	23	7

ALUMNI FEED BACK ANALYSIS 2022-23



PRINCIPAL
MALINENI LAKSHMAIAH
WOMEN'S ENGINEERING COLLEGE
PULLADIGUNTA, GUNTUR- 7

[Handwritten Signature]



MALINENI LAKSHMAIAH

WOMEN'S ENGINEERING COLLEGE

(Approved by AICTE, Affiliated to JNTUK)

(An ISO9001:2008 Certified Institution)

Department of INFORMATION TECHNOLOGY

Academic Year: 2022-23

Industry / Employer Feedback on the curriculum:

Employer Feedback is collected and analyzed taken on the syllabus designed by JNTU, Kakinada.

Q.NO	Curriculum Evaluation points	Response in %				
		5-Excellent	4-Very Good	3-Good	2-Average	1-Poor
1	How do you rate relevance of the courses in relation to the program?	12	1	1	0	1
2	How do you rate the sufficiency of the courses related to industry that are included in the program?	8	3	2	1	1
3	How do you rate the competencies in relation to the course content?	9	3	1	1	1
4	How do you rate the sequence of the units in the syllabus?	8	4	2	0	1
5	How do you rate the relevance of the topics to the Industry?	6	5	2	1	1
6	Rate the offering of the curriculum content in relation to the specialization streams?	6	5	2	1	1
7	How do you rate the offering of the electives in relation to the Technological advancements?	6	4	3	1	1
8	How do you rate the courses which are skills related suitable to the Industry included into the programs?	5	5	3	1	1
9	How do you rate the applicability of the domains and the tools used for designing the experiments in terms of existing practices in the Industry?	5	5	1	3	1
10	How do you rate the experiments in terms of their relevance to the real life application?	5	5	3	1	1
	Average	7	4	2	1	1

PRINCIPAL
MALINENI LAKSHMAIAH
WOMEN'S ENGINEERING COLLEGE
PULLADIGUNTA, SUNTUR-17

[Handwritten Signature]



MALINENI LAKSHMAIAH

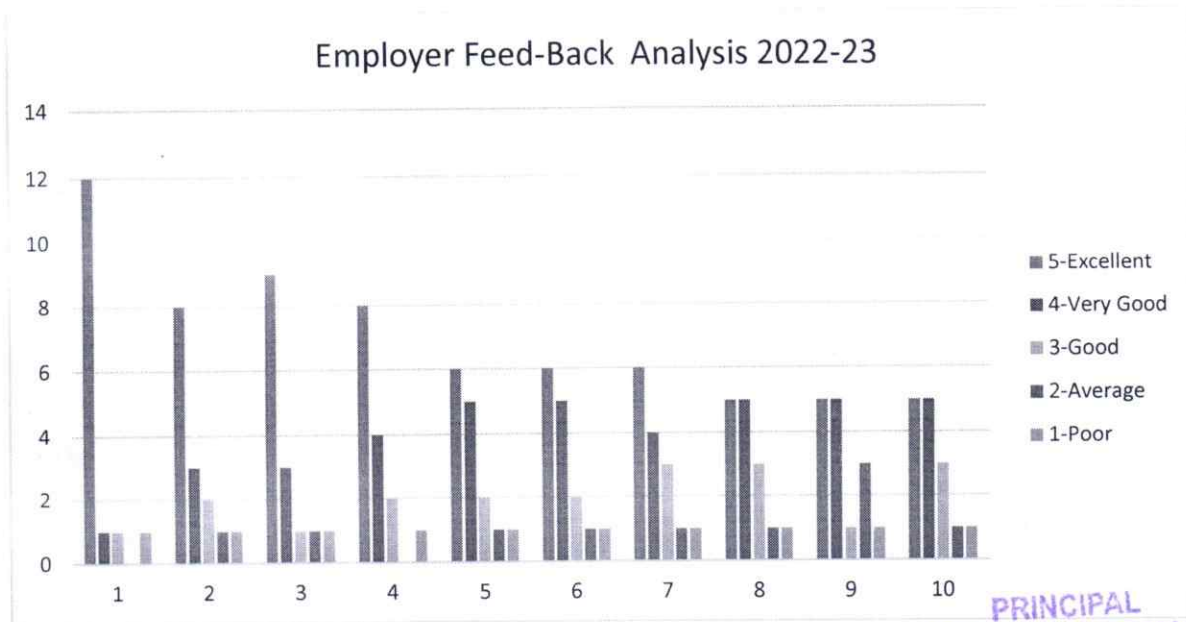
WOMEN'S ENGINEERING COLLEGE

(Approved by AICTE, Affiliated to JNTUK)

(An ISO9001:2008 Certified Institution)

Department of INFORMATION TECHNOLOGY

Academic Year: 2022-23



PRINCIPAL
MALINENI LAKSHMAIAH
WOMEN'S ENGINEERING COLLEGE
PULLADIGUNTA, GUNTUR- 7

HOD

PRINCIPAL



MALINENI LAKSHMAIAH WOMEN'S ENGINEERING COLLEGE, GUNTUR

Approved by AICTE, New Delhi & Affiliated to JNTUK, Kakinada

(An ISO9001:2008 Certified Institution)

Pulladigunta (Vil), Vatticherukuru (Md), Prathipadu Road, Guntur – 522 017 A.P.

DEPARTMENT OF MASTER OF BUSINESS ADMINISTRATION

Report on Analysis Feedback on Curriculum Collected From Different Stakeholders

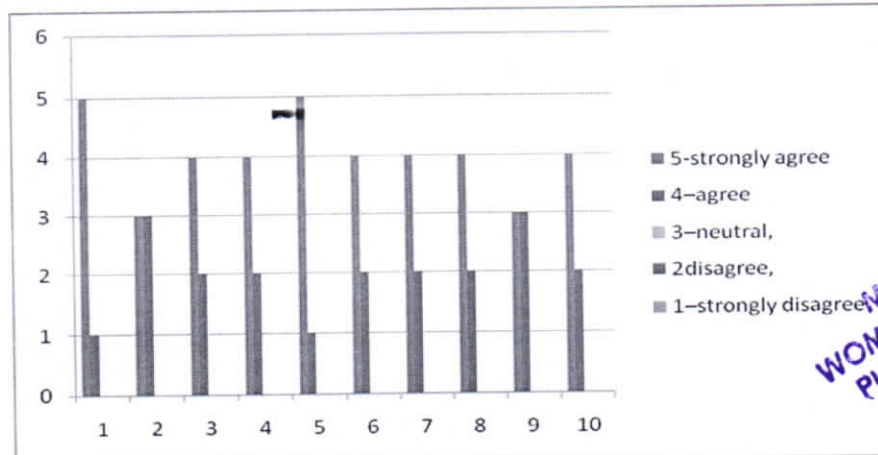
Academic Year: 2022-2023

Teachers' Feedback on Curriculum:

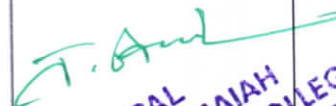
The Feedback on Curriculum is taken by respective 6 subject teachers regarding suggestions on Improvement of the syllabus

(5-strongly agree, 4-agree, 3-neutral, 2-disagree, 1-strongly disagree)

Curriculum Evaluation:	5	4	3	2	1
1. Is the Syllabus suitable to the program	5	1			
2. Is the Syllabus need based	3	3			
3. Were the Aims and Objectives of the syllabus well defined and clear to the teachers and students?	4	2			
4. Is the Course content follows the corresponding reference materials	4	2			
5. Does the course/syllabus have good balance between theory and practice?	5	1			
6. Does the course/syllabus have created interest in the subject area?	4	2			
7. Does the course/syllabus of this subject increase student knowledge and perspective in the subject area?	4	2			
8. Does the course/program of studies carry sufficient number of optional courses?	4	2			
9. Does the books prescribed/listed as reference materials are relevant, updated and appropriate	3	3			
10. Do you have the freedom to adopt new techniques/strategies of teaching such as seminar presentations, group discussions and learners' participations?	4	2			
Average	4	2			



TEACHERS' FEED BACK


PRINCIPAL
MALINENI LAKSHMAIAH
WOMEN'S ENGINEERING COLLEGE
PULLADIGUNTA, GUNTUR-522017



MALINENI LAKSHMAIAH WOMEN'S ENGINEERING COLLEGE, GUNTUR

Approved by AICTE, New Delhi & Affiliated to JNTUK, Kakinada

(An ISO9001:2008 Certified Institution)

Pulladigunta (Vil), Vatticherukuru (Md), Prathipadu Road, Guntur – 522 017 A.P.

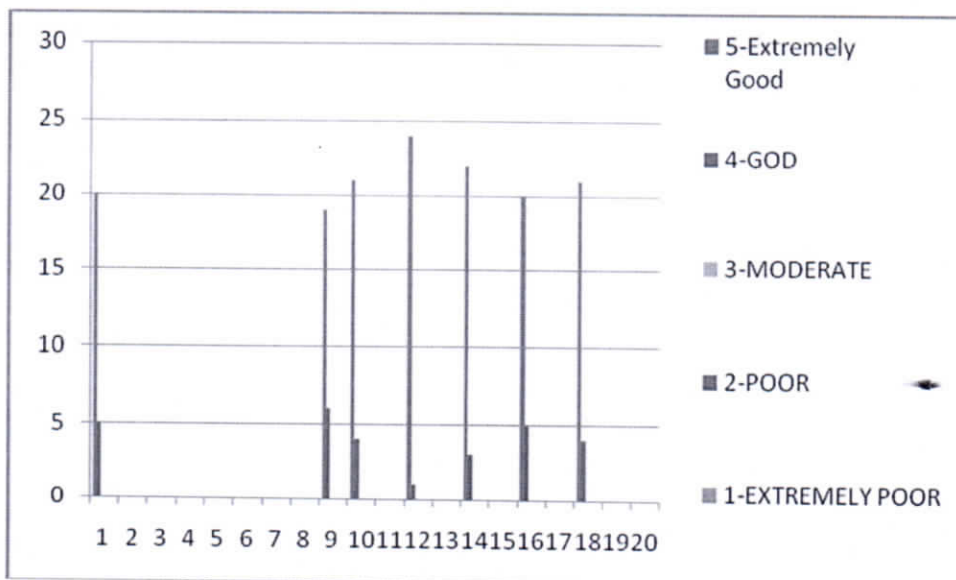
DEPARTMENT OF MASTER OF BUSINESS ADMINISTRATION

STUDENT FEED BACK FORM ON CURRICULUM:

Feedback on Syllabus is taken and analyzed 25 Students collected to relevant questionnaires

5	4	3	2	1
Extremely Good	Good	Moderate	Poor	Extremely Poor

S.No.	Particulars	Rating				
		5	4	3	2	1
1	1.Learning value (in terms of skills, concepts, knowledge, analytical abilities, or	20	5			
	2.Applicability/relevance to real life situations					
	3.Depth of the course content					
	4.Extent of coverage of course					
	5.Extent of effort required by students					
	6.Relevance/learning value of project/ report					
	7.Overall rating					
2	The syllabus was	19	6			
3	Your background for benefiting from the course was	21	4			
4	How much of the syllabus was taught in class?	24	1			
5	What is your opinion about the library holdings for	22	3			
6	Were you able to get the prescribed course materials?	20	5			
7	In your opinion, how much of the total weight age of a	21	4			
	AVERAGE	21	4			



STUDENTS FEED BACK (2022-23)

J. And

R. Subbarao
Signature of HOD



MALINENI LAKSHMAIAH WOMEN'S ENGINEERING COLLEGE, GUNTUR

Approved by AICTE, New Delhi & Affiliated to JNTUK, Kakinada

(An ISO9001:2008 Certified Institution)

Pulladigunta (Vil), Vatticherukuru (Md), Prathipadu Road, Guntur – 522 017 A.P.

DEPARTMENT OF MASTER OF BUSINESS ADMINISTRATION

Action taken Feedback on Curriculum (A.Y:2022-23)

The Feedback Analysis Committee of the institution designs and collects feedback from its stakeholders to monitor and evaluate its performance quality on curriculum and curriculum related issues on JNTUK. The feedback forms were collected from students, teachers,

The feedback targets following different content for different stakeholders.

1) Suggestions and Action Taken Report of the Students:

S.No	Suggestions Action Taken	Action Taken
1	Students provided suggestions on teaching learning	On the basis of Feedback given by the students it was decided to make the teaching more practical based. All Faculties were asked to design their knowledge imparting method in such a way that its imparting method goes beyond lecture method.
2	Students suggested that they should be imparted training on facing Job Interviews specifically for Campus Recruitment Drive	Mock Interview Sessions were conducted by the Placement Cell and regular training was given to face the interviews
3	Exposure to latest developments and advances should be known to the students	Experts were invited to share their Knowledge to our faculty and students. This helped them to interact with the resource persons and was motivated to do higher studies and take up jobs which has challenging future ahead.
4	More field trips/industrial visits to get the practical knowledge	The students were taken for educational tours department-wise.

2) Suggestions and Action Taken Report of the Faculty:

Suggestions:

- Conduct orientation on how to publish research papers and develop research facilities and incentives.



MALINENI LAKSHMAIAH WOMEN'S ENGINEERING COLLEGE, GUNTUR

Approved by AICTE, New Delhi & Affiliated to JNTUK, Kakinada

(An ISO9001:2008 Certified Institution)

Pulladigunta (Vil), Vatticherukuru (Md), Prathipadu Road, Guntur – 522 017 A.P.

DEPARTMENT OF MASTER OF BUSINESS ADMINISTRATION

-
- b) Need to develop staff friendly atmosphere in the college. Staff should have the freedom to express their opinions as well as their difficulties in implementation of things related to college.
 - c) Remedial classes should be conducted only to those students who get below 60% of marks.
 - d) Need to delegate work depending on the capability of the individual.

Action taken Report

- a) Faculty development programmes are organized at regular intervals to develop research and quality in teaching/learning and mentoring.
- b) Students are tested before admitting them into various groups. Every faculty member needs to work hard to improve the strength.
- c) Formats for mentoring are finalized before sending them to faculty. Minor changes are made when necessary

J. Anand
IPAL
MALINENI LAKSHMAIAH
WOMEN'S ENGINEERING COLLEGE
PULLADIGUNTA, GUNTUR-522017.

R. Pulao